

SPECIFICATION FOR APPROVAL

承认书

CUSTOMER

客户名称:

NUMBER

编号:

DESCRIPTION

品名: 贴片共模滤波器

QUANTITY

数量:

PART NO.

型号: BCDCM9070-2-501TA

DATE

日期:

CUSTOMER PART NO.

客户料号:

NOTE

注解:

APPROVAL SIGNATURE
客户承认签章

| APPROVED BY 核准 | Q. C. DEPT. 品管 | CHECKED BY 核查 | DRAWN BY 制作 |
|-------------------|-------------------|------------------|----------------|
| | | | |

BCDCM9070-2-501TA

DC COMMON MODE FILTER

FEATURES

- A chip-type common mode filter for large current applications. Common mode impedance surpasses $450\ \Omega$ at 100MHz. Noise is greatly suppressed.
- Capable of handling the highest current (up to 5.5A) of any chip-type common mode filter.
- Height and size have been considered, resulting in a compact and light-weight choke coil. Applicable for the miniaturization required to reduce the size and weight of portable equipment.
- The products contain no lead and also support lead-free soldering.
- The product does not contain regulatde substances that are slated to be included in ROHS.



APPLICATIONS

Used for power line noise suppression for any electronic-devices
Used to counter adapter/battery line noise for relatively large electronic devices such as notebook PCs, stand-alone word processors, etc

TEMPERATURE RANGES

| | |
|-----------------------|-------------|
| Operating | -40to+125°C |
| Storage (After mount) | -40to+125°C |

Part Number System

BCDCM 9070 -2 -501 T A

① ② ③ ④ ⑤ ⑥

- ① Type:BCDCM
- ② External Dimensions(L×W) (mm) :9.0*7.0
- ③ Number of Lines: 2
- ④ Impedance:501=600 Ω
- ⑤ Packing:Tape & Reel
- ⑥ Management Symbol:A

ELECTRICAL CHARACTERISTICS

| Part No. | Impedance[at 100MHz] (Ω) | | DC resistance ($m\ \Omega$) max [1 line] | Rated current ldc (A) max | Insulation resistance ($M\ \Omega$) min |
|-------------------|-----------------------------------|-----|---|------------------------------|--|
| | min | typ | | | |
| BCDCM9070-2-501TA | 450 | 600 | 8 | 5.5 | 10 |

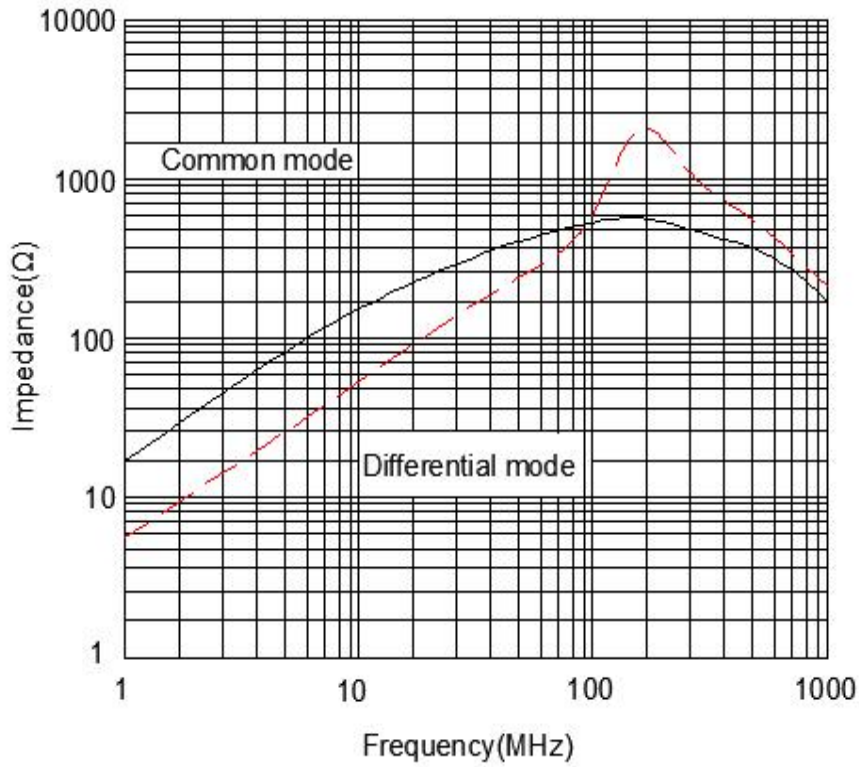
BCDCM9070-2-501TA

DC COMMON MODE FILTER

TYPICAL ELECTRICAL CHARACTERISTICS

IMPEDANCE vs. FREQUENCY CHARACTERISTICS

BCDCM9070-2-501TA

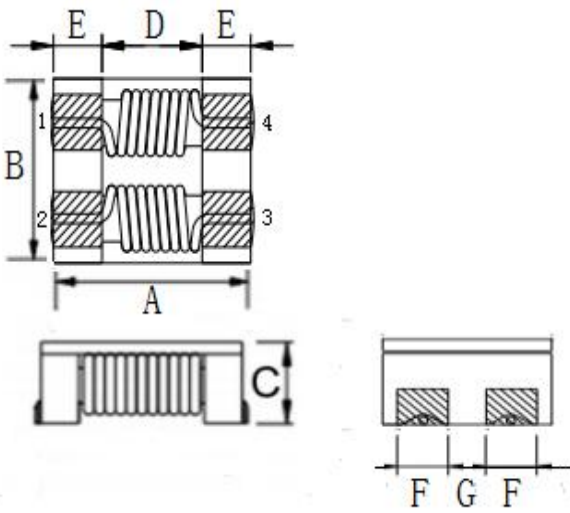


BCDCM9070-2-501TA

DC COMMON MODE FILTER

SHAPES AND DIMENSIONS/CIRCUIT DIAGRAM/RECOMMENDED PC BOARD PATTERN (REFLOW SOLDERING)

◆ Dimensions (mm)



UNIT: mm

A: 9.0 ± 0.5

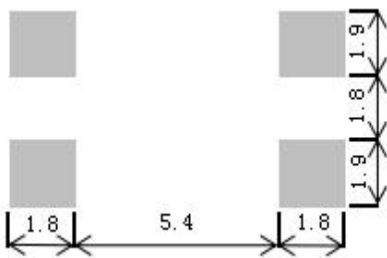
B: 7.0 ± 0.5

C: 4.8 (MAX)

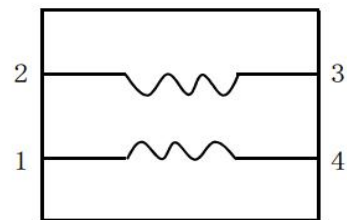
D: 5.6 E: 1.7

F: 1.8 G: 2.0

◆ Land Pattern (mm)



◆ Schematics (Bottom)

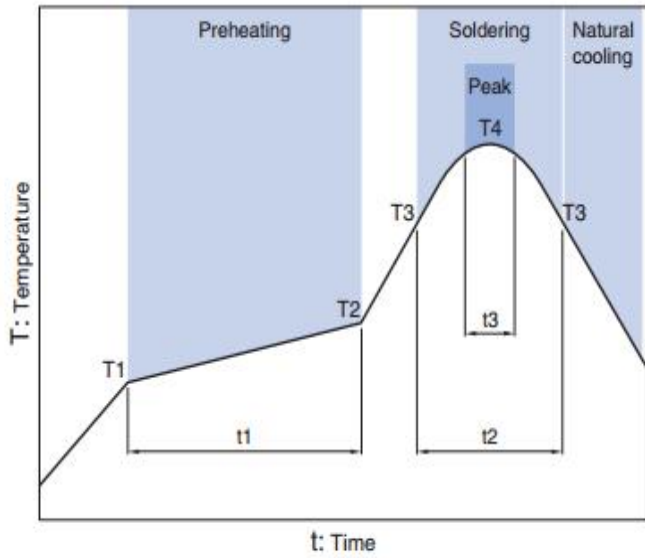


No polarity

BCDCM9070-2-501TA

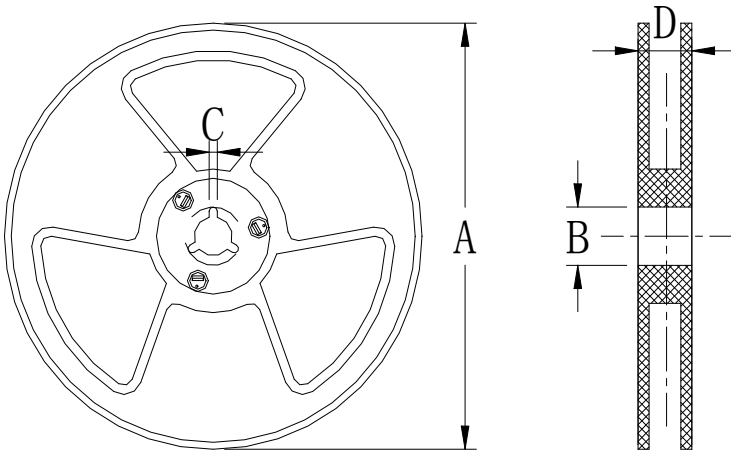
DC COMMON MODE FILTER

Recommended Reflow Temperature Curve



| Preheating | | | Soldering | | Peak | |
|------------|-------|------------|-----------|-----------|-------|------|
| Temp. | Temp. | Time | Temp. | Time | Temp. | Time |
| T1 | T2 | t1 | T3 | t2 | T4 | t3 |
| 150°C | 180°C | 60 to 120s | 230°C | 10 to 30s | 245°C | 5s |

Package size (mm)



| size | Specs | |
|------|--------------------|--------------------|
| | 13" | 7" |
| A | $\Phi 330 \pm 2.0$ | $\Phi 178 \pm 2.0$ |
| B | $\Phi 90 \pm 2.0$ | |
| C | 2.3 | |
| D | 21.5 | |