

SPECIFICATION FOR APPROVAL

承 认 书

CUSTOMER

客户名称:

NUMBER

编 号:

DESCRIPTION

品 名: 贴片共模滤波器

QUANTITY

数 量:

PART NO.

型 号: BCDCM1513-2-152TA

DATE

日 期:

CUSTOMER PART NO.

客户料号:

NOTE

注 解:

| |
|------------------------------|
| APPROVAL SIGNATURE 客户承认签章 |
| |

| APPROVED BY 核 准 | Q. C. DEPT. 品 管 | CHECKED BY 核 查 | DRAWN BY 制 作 |
|--------------------|--------------------|-------------------|-----------------|
| | | | |

BCDCM1513-2-152TA

DC COMMON MODE FILTER

FEATURES

- A chip-type common mode filter for large current applications.
Common mode impedance surpasses 1100Ω at 50MHz.
Noise is greatly suppressed.
- Capable of handling the highest current (up to 7.8A) of any chip-type common mode filter.
- Height and size have been considered, resulting in a compact and light-weight choke coil. Applicable for the miniaturization required to reduce the size and weight of portable equipment.
- The products contain no lead and also support lead-free soldering.
- The product does not contain regulatde substances that are slated to be included in ROHS.



APPLICATIONS

Used for power line noise suppression for any electronic-devices
Used to counter adapter/battery line noise for relatively large electronic devices such as notebook PCs, stand-alone word processors, etc

TEMPERATURE RANGES

| | |
|-----------------------|-------------|
| Operating | -40to+125°C |
| Storage (After mount) | -40to+125°C |

Part Number System

BCDCM 1513 -2 -152 T A

① ② ③ ④ ⑤ ⑥

- ① Type:BCDCM
- ② External Dimensions (L×W) (mm):15*13
- ③ Number of Lines: 2
- ④ Impedance:152=1500Ω
- ⑤ Packing:Tape & Reel
- ⑥ Management Symbol:A

ELECTRICAL CHARACTERISTICS

| Part No. | Impedance (Ω) [at 50MHz] | | DC resistance | Rated current | Insulation resistance |
|-------------------|--------------------------|------|-------------------|---------------|-----------------------|
| | min | TYP | (mΩ) max [1 line] | Idc (A) max | (MΩ) min |
| BCDCM1513-2-152TA | 1100 | 1500 | 14 | 7.8 | 10 |

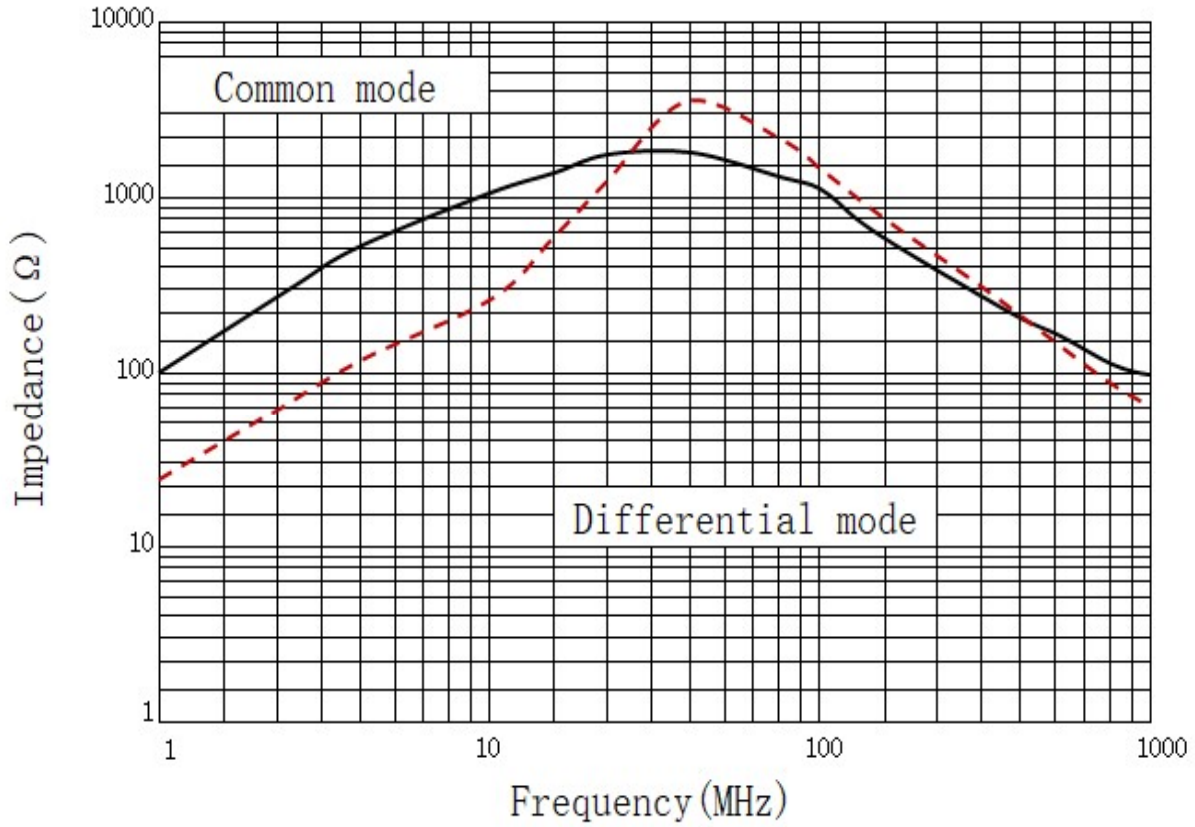
BCDCM1513-2-152TA

DC COMMON MODE FILTER

TYPICAL ELECTRICAL CHARACTERISTICS

IMPEDANCE vs. FREQUENCY CHARACTERISTICS

BCDCM1513-2-152TA

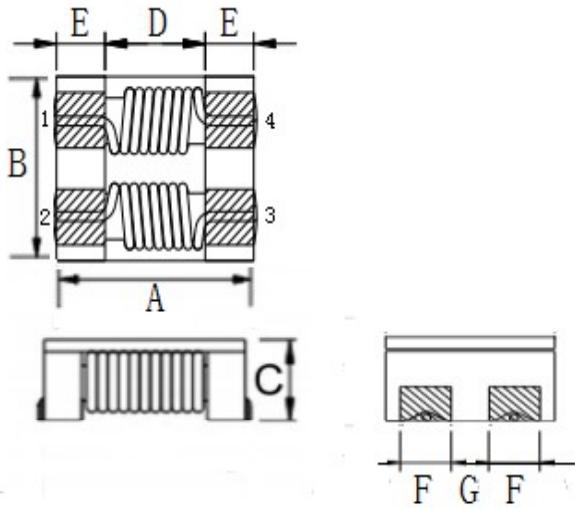


BCDCM1513-2-152TA

DC COMMON MODE FILTER

SHAPES AND DIMENSIONS/CIRCUIT DIAGRAM/RECOMMENDED PC BOARD PATTERN (REFLOW SOLDERING)

◆ Dimensions (mm)



UNIT: mm

A: 15.0 ± 0.5

B: 13.0 ± 0.5

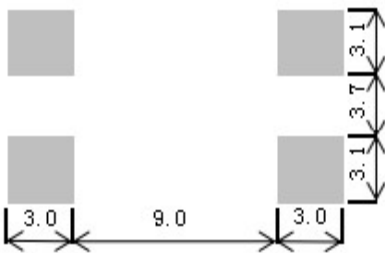
C: 7.5 (MAX)

D: 9.0 E: 3.0

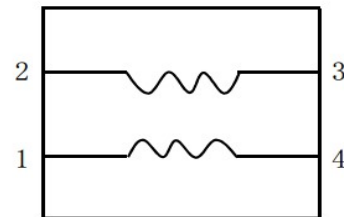
F: 3.1 ± 0.1

G: 3.7 ± 0.6

◆ Land Pattern (mm)



◆ Schematics (Bottom)

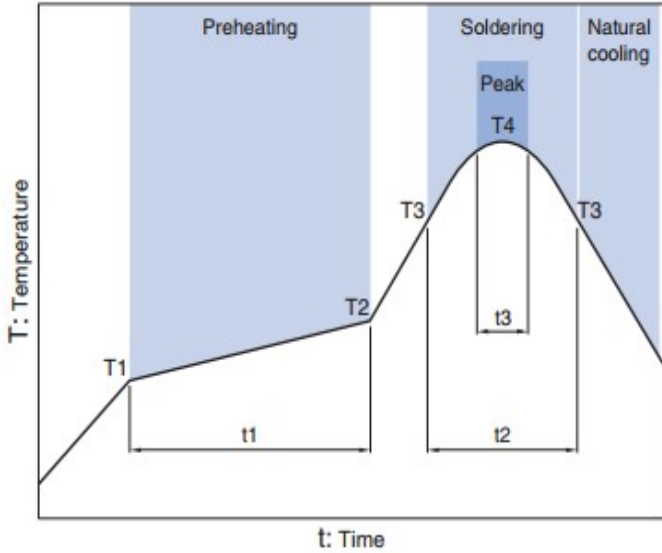


No polarity

BCDCM1513-2-152TA

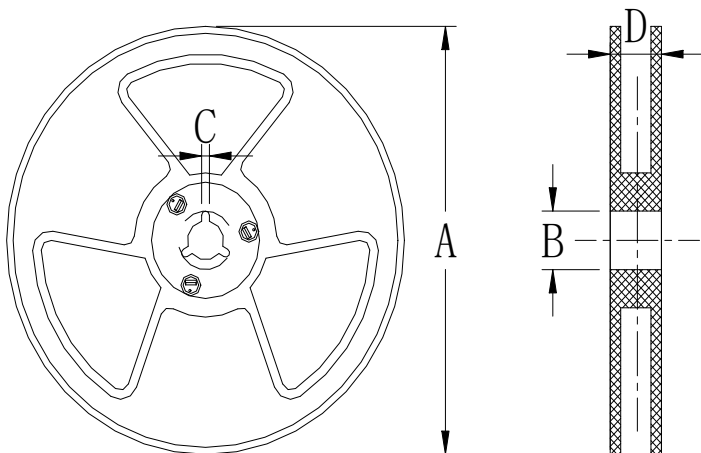
DC COMMON MODE FILTER

Recommended Reflow Temperature Curve



| Preheating | | | Soldering | | Peak | |
|------------|-------|------------|-----------|-----------|-------|------|
| Temp. | Temp. | Time | Temp. | Time | Temp. | Time |
| T1 | T2 | t1 | T3 | t2 | T4 | t3 |
| 150°C | 180°C | 60 to 120s | 230°C | 10 to 30s | 245°C | 5s |

Package size (mm)



| size | Specs | 13" | 7" |
|------|-------|-------------------|--------------------|
| | A | | $\Phi 330 \pm 2.0$ |
| B | | $\Phi 90 \pm 2.0$ | |
| C | | 2.3 | |
| D | | 21.5 | |