

SPECIFICATION FOR APPROVAL

承认书

CUSTOMER

客户名称:

NUMBER

编号:

DESCRIPTION

品名: 贴片共模滤波器

QUANTITY

数量:

PART NO.

型号: BCCM7660-2-451T01

DATE

日期:

CUSTOMER PART NO.

客户料号:

NOTE

注解:

APPROVAL SIGNATURE 客户承认签章

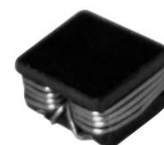
APPROVED BY 核准	Q. C. DEPT. 品管	CHECKED BY 核查	DRAWN BY 制作

BCCM7660-2-451T01

DC COMMON MODE FILTER

FEATURES

- A chip-type common mode filter for large current applications. Common mode impedance surpasses 450Ω at 100MHz. Noise is greatly suppressed.
- Capable of handling the highest current (up to 3A) of any chip-type common mode filter.
- Height and size have been considered, resulting in a compact and light-weight choke coil. Applicable for the miniaturization required to reduce the size and weight of portable equipment.
- The products contain no lead and also support lead-free soldering.
- The product does not contain regulated substances that are slated to be included in ROHS.



APPLICATIONS

Used for power line noise suppression for any electronic devices
Used to counter adapter/battery line noise for relatively large electronic devices such as notebook PCs, stand-alone word processors, etc

TEMPERATURE RANGES

Operating	-40to+125°C
Storage (After mount)	-40to+125°C

Part Number System

BCCM 7660 -2 -451 T 01

① ② ③ ④ ⑤ ⑥

- ① Type: BCCM
- ② External Dimensions (L×W) (mm): 7.6*6.0
- ③ Number of Lines: 2
- ④ Impedance: 451=450Ω
- ⑤ Packing: Tape & Reel
- ⑥ Management Symbol: 01

ELECTRICAL CHARACTERISTICS

Part No.	Impedance (Ω)min[at 100MHz]	DC resistance (mΩ)max[1 line]	Rated current Idc(A)max	Insulation resistance (MΩ)min
BCCM7660-2-451T01	450	30	3	10

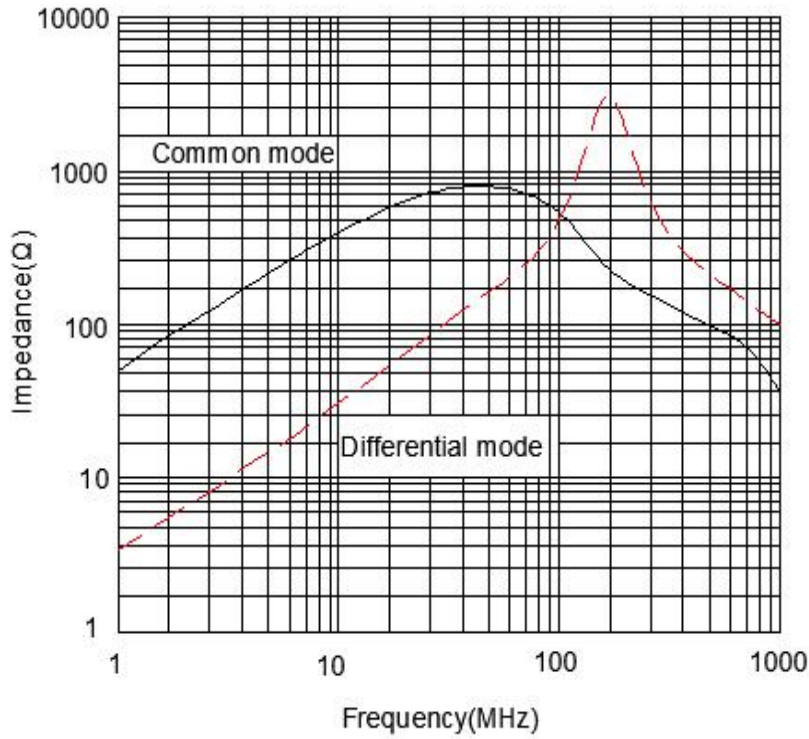
BCCM7660-2-451T01

DC COMMON MODE FILTER

TYPICAL ELECTRICAL CHARACTERISTICS

IMPEDANCE vs. FREQUENCY CHARACTERISTICS

BCCM7660-2-451T01



BCCM7660-2-451T01

DC COMMON MODE FILTER

SHAPES AND DIMENSIONS/CIRCUIT DIAGRAM/RECOMMENDED
PC BOARD PATTERN (REFLOW SOLDERING)

◆ Dimensions (mm)

UNIT: mm

A: 7.6 ± 0.5

B: 6.0 ± 0.5

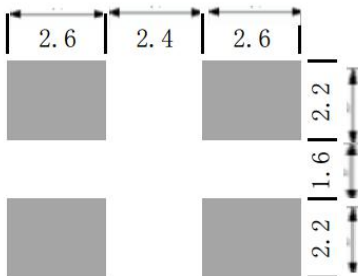
C: 4.3 (MAX)

D: 2.60 E: 2.50

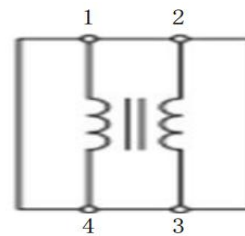
F: 2.10 G: 1.80



◆ Land Pattern (mm)



◆ Schematics (Bottom)

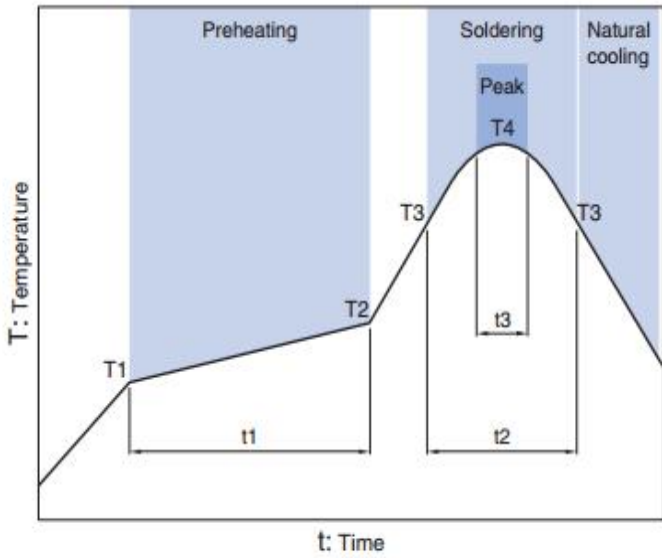


No polarity

BCCM7660-2-451T01

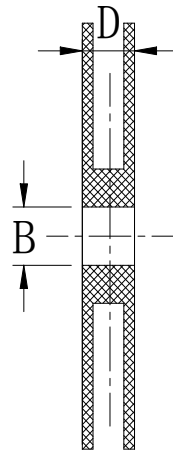
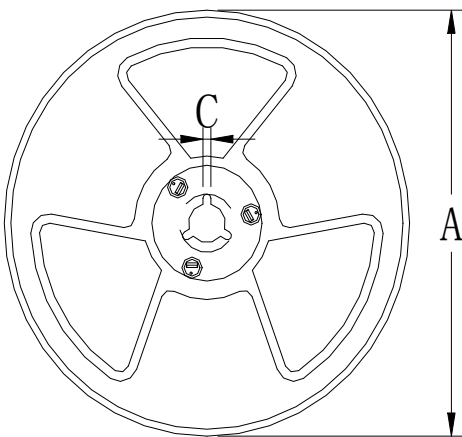
DC COMMON MODE FILTER

Recommended Reflow Temperature Curve



Preheating			Soldering		Peak	
Temp.	Temp.	Time	Temp.	Time	Temp.	Time
T1	T2	t1	T3	t2	T4	t3
150°C	180°C	60 to 120s	230°C	10 to 30s	245°C	5s

Package
size (mm)



size \ Specs	13"	7"
A	$\Phi 330 \pm 2.0$	$\Phi 178 \pm 2.0$
B	$\Phi 90 \pm 2.0$	
C	2.3	
D	21.5	