

SPECIFICATION FOR APPROVAL

承 认 书

CUSTOMER

客户名称:

NUMBER

编 号:

DESCRIPTION

品 名: 贴片共模滤波器

QUANTITY

数 量:

PART NO.

型 号: BCCM1008-2-801T02

DATE

日 期:

CUSTOMER PART NO.

客户料号:

NOTE

注 解:

APPROVAL SIGNATURE 客户承认签章

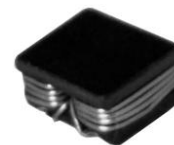
APPROVED BY 核 准	Q. C. DEPT. 品 管	CHECKED BY 核 查	DRAWN BY 制 作

BCCM1008-2-801T02

DC COMMON MODE FILTER

FEATURES

- A chip-type common mode filter for large current applications. Common mode impedance surpasses 800Ω at 100MHz. Noise is greatly suppressed.
- Capable of handling the highest current (up to 4.0A) of any chip-type common mode filter.
- Height and size have been considered, resulting in a compact and light-weight choke coil. Applicable for the miniaturization required to reduce the size and weight of portable equipment.
- The products contain no lead and also support lead-free soldering.
- The product does not contain regulated substances that are slated to be included in ROHS.



APPLICATIONS

Used for power line noise suppression for any electronic devices
Used to counter adapter/battery line noise for relatively large electronic devices such as notebook PCs, stand-alone word processors, etc

TEMPERATURE RANGES

Operating	-40to+125°C
Storage (After mount)	-40to+125°C

Part Number System

BCCM 1008 -2 -801 T 02

① ② ③ ④ ⑤ ⑥

- ① Type: BCCM
- ② External Dimensions (L×W) (mm): 10.0*8.0
- ③ Number of Lines: 2
- ④ Impedance: 801=800Ω
- ⑤ Packing: Tape & Reel
- ⑥ Management Symbol: 02

ELECTRICAL CHARACTERISTICS

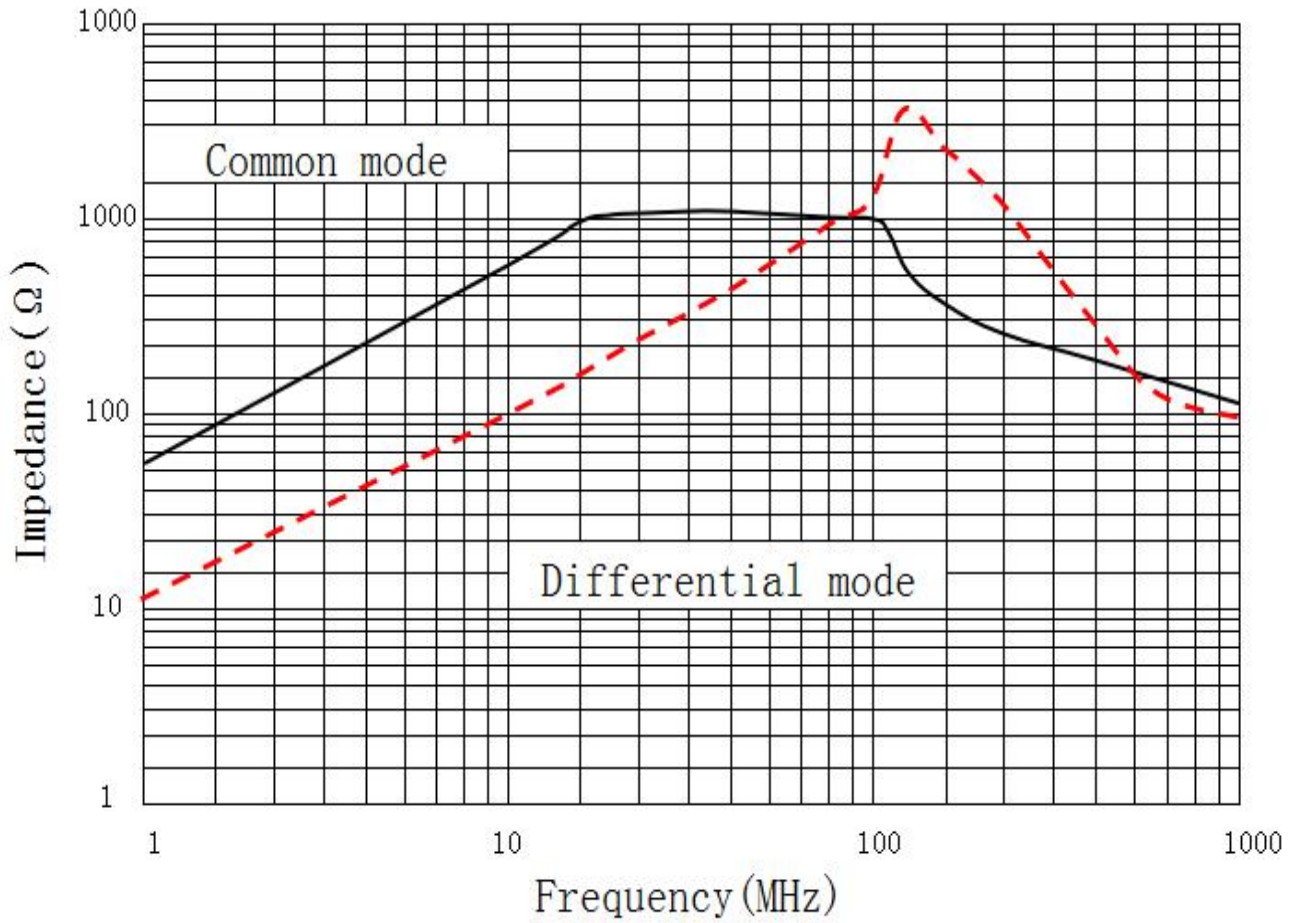
Part No.	Impedance (Ω) min [at 100MHz]	DC resistance (mΩ) max [1 line]	Rated current Idc (A) max	Insulation resistance (MΩ) min
BCCM1008-2-801T02	800	22	4	10

BCCM1008-2-801T02

DC COMMON MODE FILTER

TYPICAL ELECTRICAL CHARACTERISTICS
IMPEDANCE vs. FREQUENCY CHARACTERISTICS

BCCM1008-2-801T02

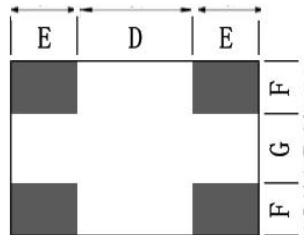
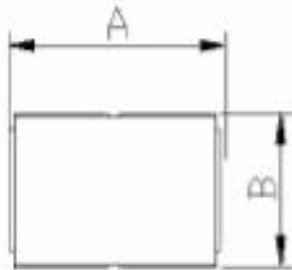


BCCM1008-2-801T02

DC COMMON MODE FILTER

SHAPES AND DIMENSIONS/CIRCUIT DIAGRAM/RECOMMENDED
PC BOARD PATTERN (REFLOW SOLDERING)

◆ Dimensions (mm)



UNIT: mm

A: 10.2 ± 0.5

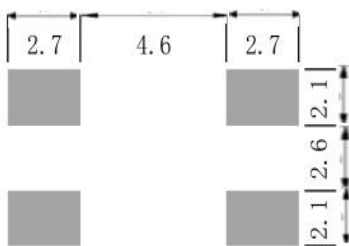
B: 8.2 ± 0.5

C: 6.0 (MAX)

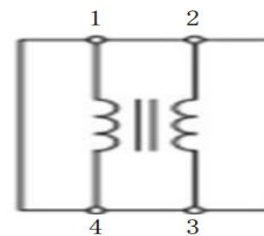
D: 5.0 E: 2.50

F: 1.90 G: 3.0

◆ Land Pattern (mm)



◆ Schematics (Bottom)

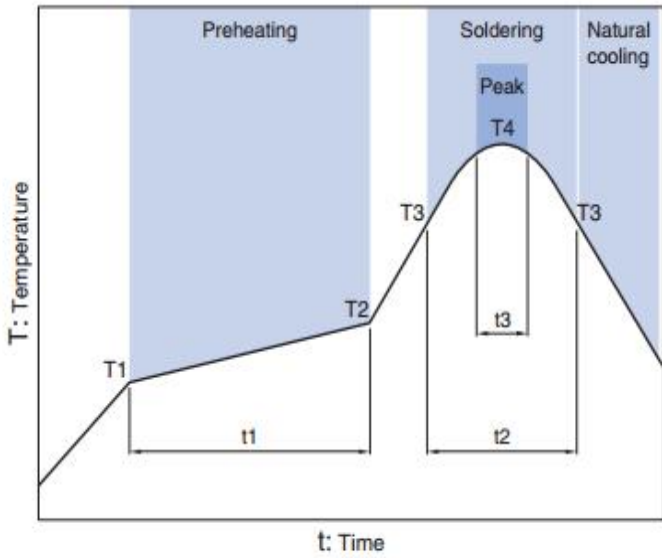


No polarity

BCCM1008-2-801T02

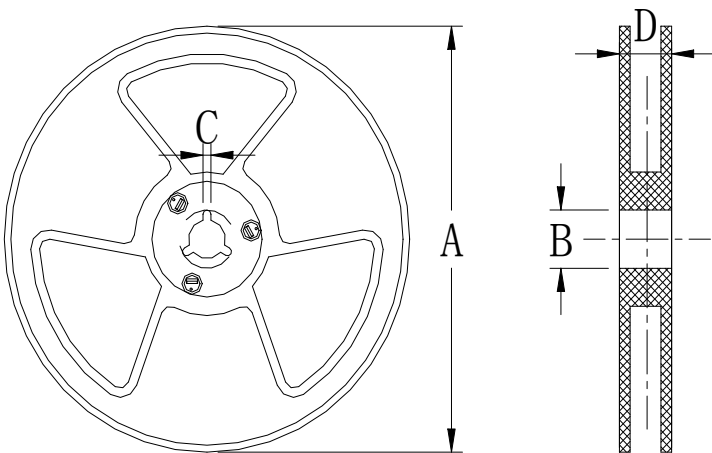
DC COMMON MODE FILTER

Recommended Reflow Temperature Curve



Preheating			Soldering		Peak	
Temp.	Temp.	Time	Temp.	Time	Temp.	Time
T1	T2	t1	T3	t2	T4	t3
150°C	180°C	60 to 120s	230°C	10 to 30s	245°C	5s

Package size (mm)



Specs size	13"	7"
A	$\Phi 330 \pm 2.0$	$\Phi 178 \pm 2.0$
B	$\Phi 90 \pm 2.0$	
C	2.3	
D	21.5	