

# SPECIFICATION FOR APPROVAL

# 承 认 书

CUSTOMER

NUMBER

客户名称:

编 号:

DESCRIPTION

QUANTITY

品 名: 贴片共模滤波器

数 量:

PART NO.

DATE

型 号: BCCM1008-2-501T02

日 期:

CUSTOMER PART NO.

NOTE

客户料号:

注 解:

APPROVAL SIGNATURE 客户承认签章

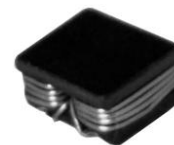
APPROVED BY 核 准	Q. C. DEPT. 品 管	CHECKED BY 核 查	DRAWN BY 制 作

# BCCM1008-2-501T02

## DC COMMON MODE FILTER

### FEATURES

- A chip-type common mode filter for large current applications. Common mode impedance surpasses 500Ω at 100MHz. Noise is greatly suppressed.
- Capable of handling the highest current (up to 6.5A) of any chip-type common mode filter.
- Height and size have been considered, resulting in a compact and light-weight choke coil. Applicable for the miniaturization required to reduce the size and weight of portable equipment.
- The products contain no lead and also support lead-free soldering.
- The product does not contain regulated substances that are slated to be included in ROHS.



### APPLICATIONS

Used for power line noise suppression for any electronic devices  
Used to counter adapter/battery line noise for relatively large electronic devices such as notebook PCs, stand-alone word processors, etc

### TEMPERATURE RANGES

Operating	-40to+125°C
Storage (After mount)	-40to+125°C

### Part Number System

BCCM 1008 -2 -501 T 02

①      ②      ③      ④      ⑤      ⑥

- ① Type: BCCM
- ② External Dimensions (L×W) (mm): 10.0\*8.0
- ③ Number of Lines: 2
- ④ Impedance: 501=500Ω
- ⑤ Packing: Tape & Reel
- ⑥ Management Symbol: 02

### ELECTRICAL CHARACTERISTICS

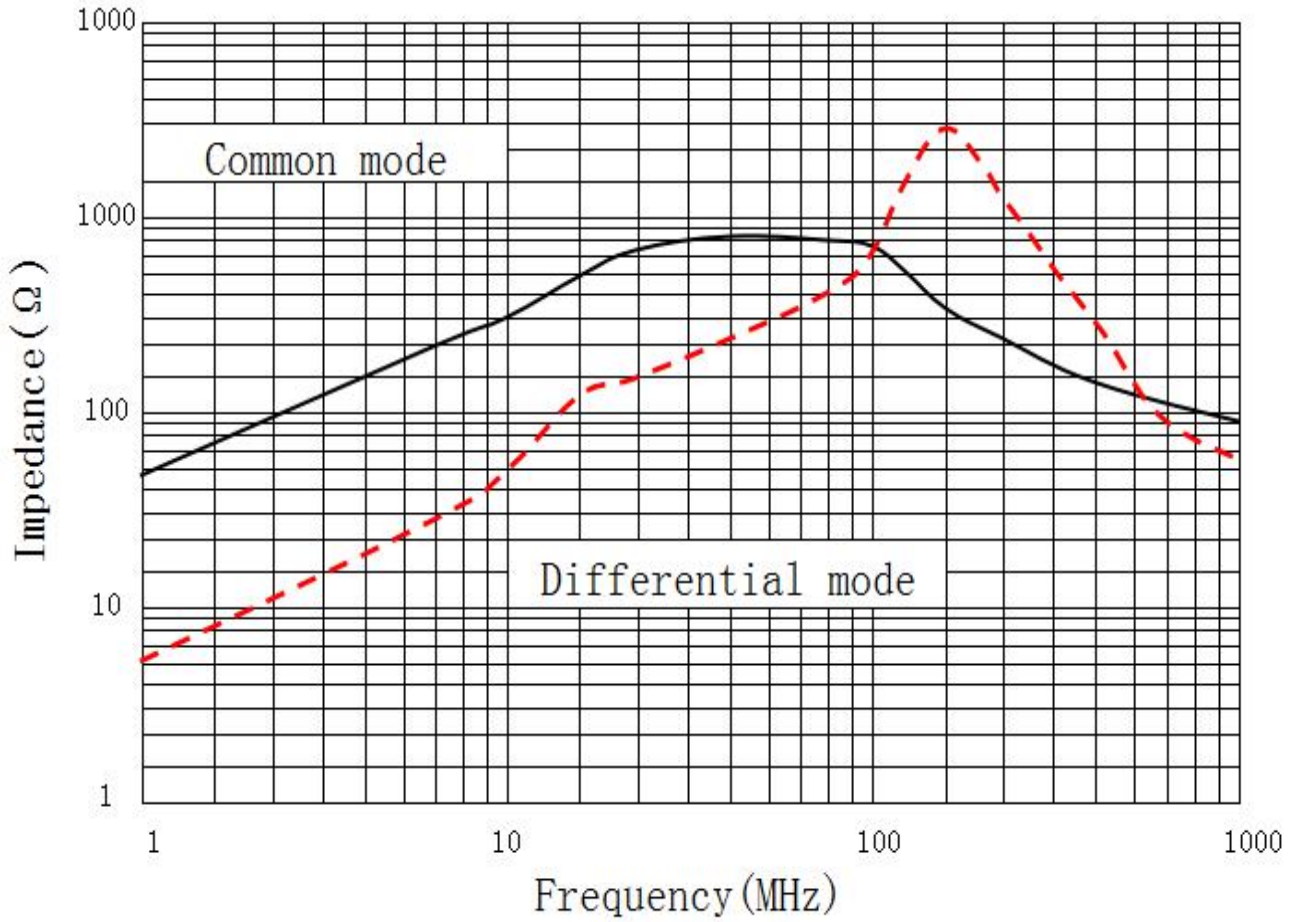
Part No.	Impedance (Ω)min[at 100MHz]	DC resistance (mΩ)max[1 line]	Rated current Idc(A)max	Insulation resistance (MΩ)min
BCCM1008-2-501T02	500	12	6.5	10

# BCCM1008-2-501T02

## DC COMMON MODE FILTER

TYPICAL ELECTRICAL CHARACTERISTICS  
IMPEDANCE vs. FREQUENCY CHARACTERISTICS

BCCM1008-2-501T02

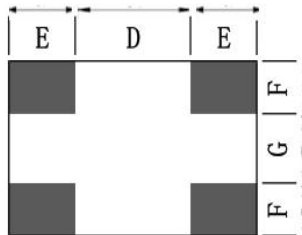
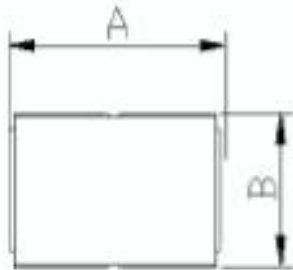


# BCCM1008-2-501T02

## DC COMMON MODE FILTER

### SHAPES AND DIMENSIONS/CIRCUIT DIAGRAM/RECOMMENDED PC BOARD PATTERN (REFLOW SOLDERING)

#### ◆ Dimensions (mm)



UNIT: mm

A:  $10.2 \pm 0.5$

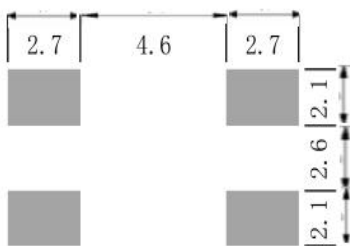
B:  $8.2 \pm 0.5$

C: 6.0 (MAX)

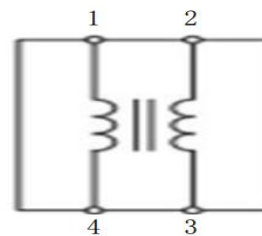
D: 5.0    E: 2.50

F: 1.90    G: 3.0

#### ◆ Land Pattern (mm)



#### ◆ Schematics (Bottom)

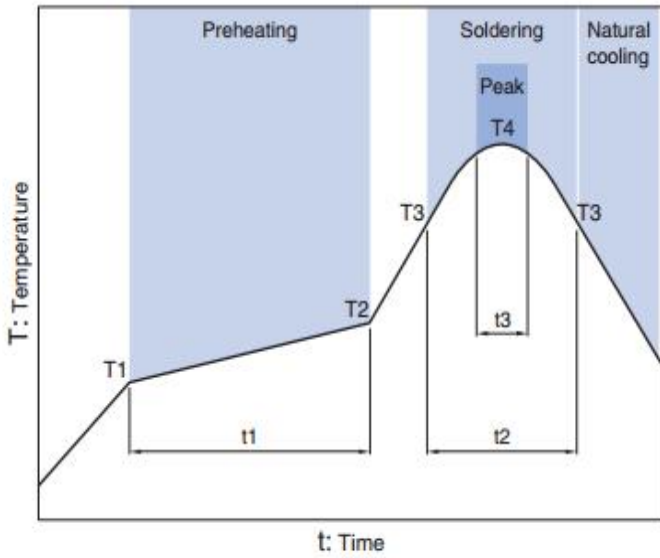


No polarity

# BCCM1008-2-501T02

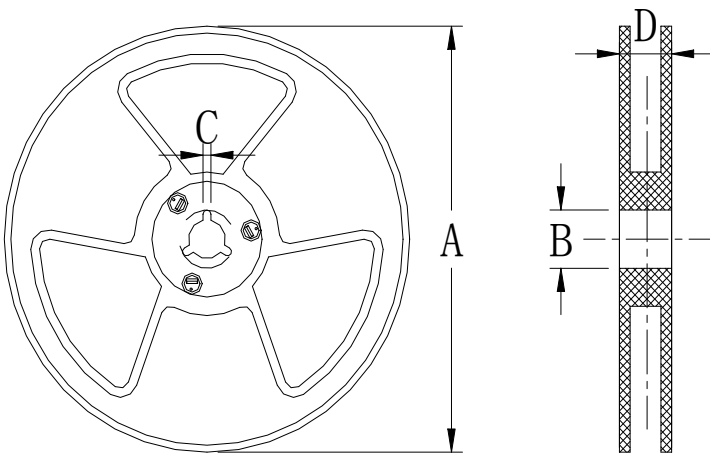
## DC COMMON MODE FILTER

### Recommended Reflow Temperature Curve



Preheating			Soldering		Peak	
Temp.	Temp.	Time	Temp.	Time	Temp.	Time
T1	T2	t1	T3	t2	T4	t3
150°C	180°C	60 to 120s	230°C	10 to 30s	245°C	5s

Package size (mm)



Specs size	13"	7"
A	$\Phi 330 \pm 2.0$	$\Phi 178 \pm 2.0$
B	$\Phi 90 \pm 2.0$	
C	2.3	
D	21.5	